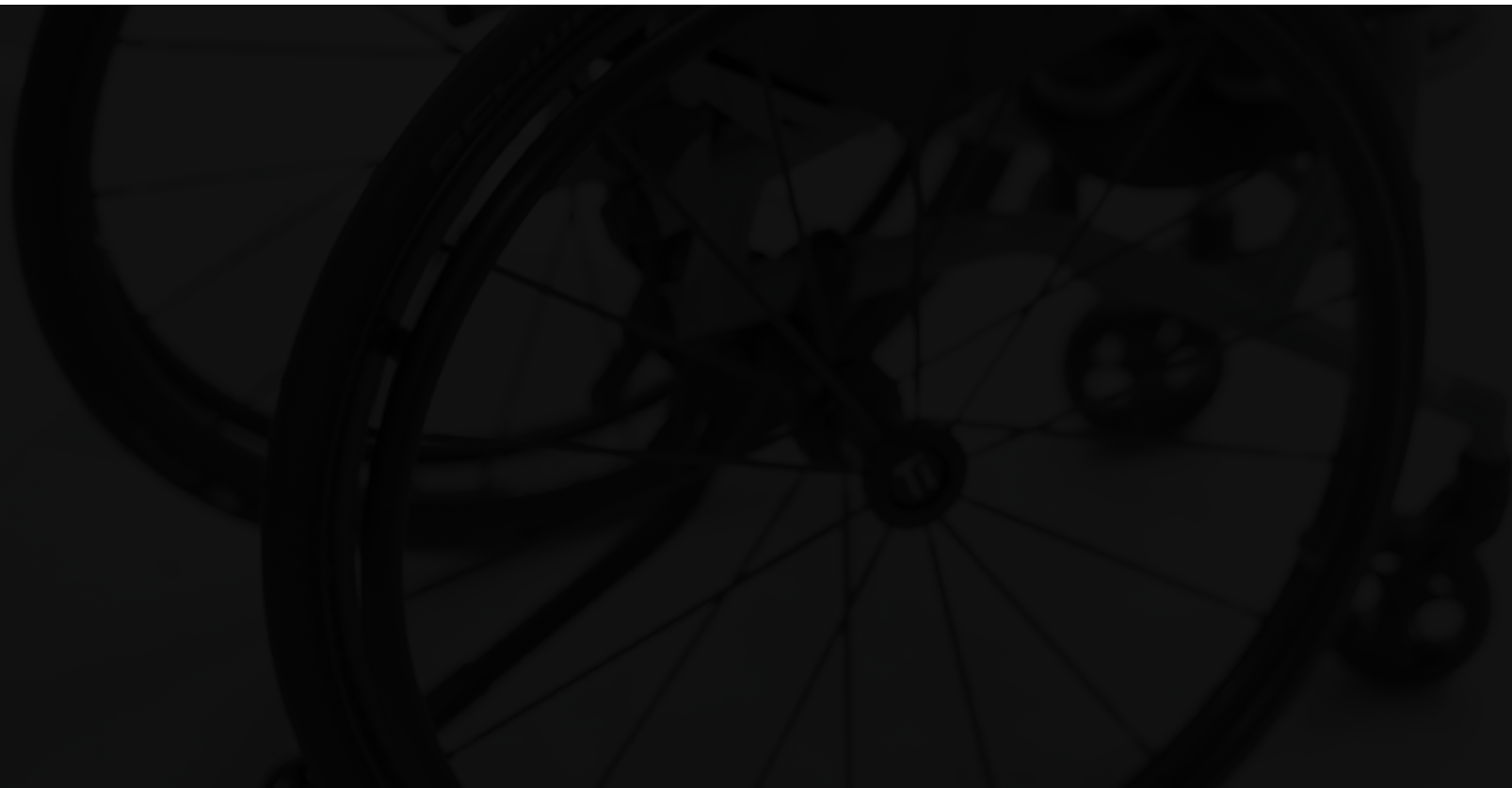


TiLite manual wheelchairs | Creative Mobility Division

# Armrest options



# How to order

## Catalog

1. Identify CMDs you wish to order and fill out. Please confirm compatibility with the chair you're ordering.
2. Fill out the catalog page corresponding to that CMD with the required information for us to complete your request.
  - EZ-Ti ID, PO#, or Quote# if available.
  - Measurements, selections, and special instructions if necessary.
3. Email the filled out page(s) to [chairs.tilite@permobil.com](mailto:chairs.tilite@permobil.com) and include Order Form if applicable.

## Order Forms

1. Identify CMDs you wish to order and fill out. Please confirm compatibility with the chair you're ordering.
2. In the "Notes" section on the last page of the order form, include the following information:
  - CMD number(s) being requested.
  - Measurements, selections, and special instructions if necessary.
3. Submit Order Form via email ([chairs.tilite@permobil.com](mailto:chairs.tilite@permobil.com)) or fax (509) 586-2413.

## EZ-Ti

1. Identify CMDs you wish to order and fill out. Please confirm compatibility with the chair you're ordering.
2. In the "CMD" section on the Summary page of EZ-Ti, include the following information:
  - CMD number(s) being requested.
  - Measurements, selections, and special instructions if necessary.
3. Submit quote request via EZ-Ti.

Please note, custom requests may impact quote turnaround time and chair build time. Pricing for these custom options may vary based on the amount of added labor and material costs.

# Unique range height adjustable, Flip-Back Armrest CMD #24

EZ-Ti ID \_\_\_\_\_

PO# \_\_\_\_\_

## Clinical rationale

Modification is indicated for individuals who present with unique and specific upper extremity positioning that is not available on the standard order form.

## Available on:

TiLite TR, TiLite TRA, TiLite ZR, TiLite ZRA, TiLite Aero T, TiLite Aero Z, TiLite Aero X, TiLite 2GX

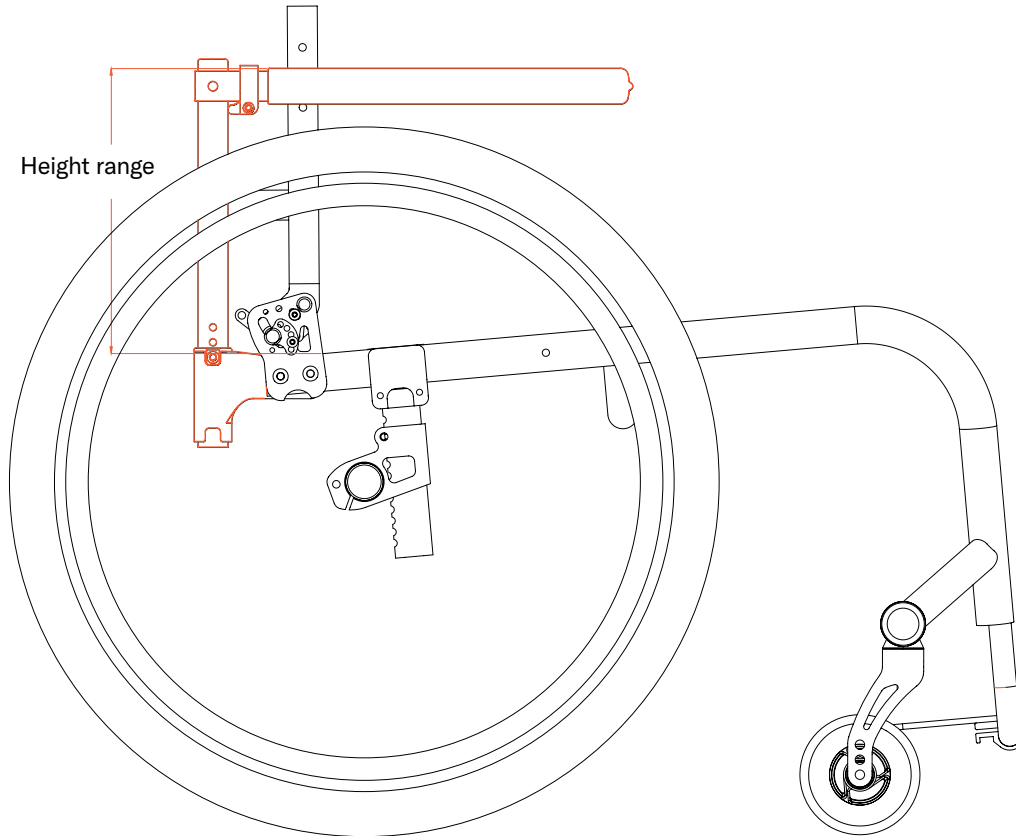
## Notes:

- Height must be denoted from seat to top of the armrest with the top of armrest parallel to the floor.
- Height range must not exceed 3" above standard range.
- The lower armrest ranges may not be achievable due to rear wheel/tire diameter and the armrest height proximity.
- May not work with all chair configurations.

## Required information

(Insert required information for CMD-E to complete this request)

Height range: \_\_\_\_\_ to \_\_\_\_\_



## Special Instructions

**permobil**

⚠ NOTE: Permobil's warranty does not cover Creative Mobility Division frames and frame components, unless Permobil determines that the frame or frame component was defectively manufactured.

# Adapted height and/or increased thick swing-away armrest CMD #51

EZ-Ti ID \_\_\_\_\_

PO# \_\_\_\_\_

**Clinical rationale**

Modification indicated for individuals who present with upper extremity shape and positioning that the standard swing-away armrest is not long enough for and does not provide the appropriate support.

**Available on:**

TiLite TR, TiLite TRA, TiLite ZR, TiLite ZRA, TiLite Aero T, TiLite Aero Z, TiLite Aero X, TiLite 2GX, TiLite TWIST

**Notes:**

- Swing-away armrest tube is 1/8" thick.
- May not work with all chair configurations.

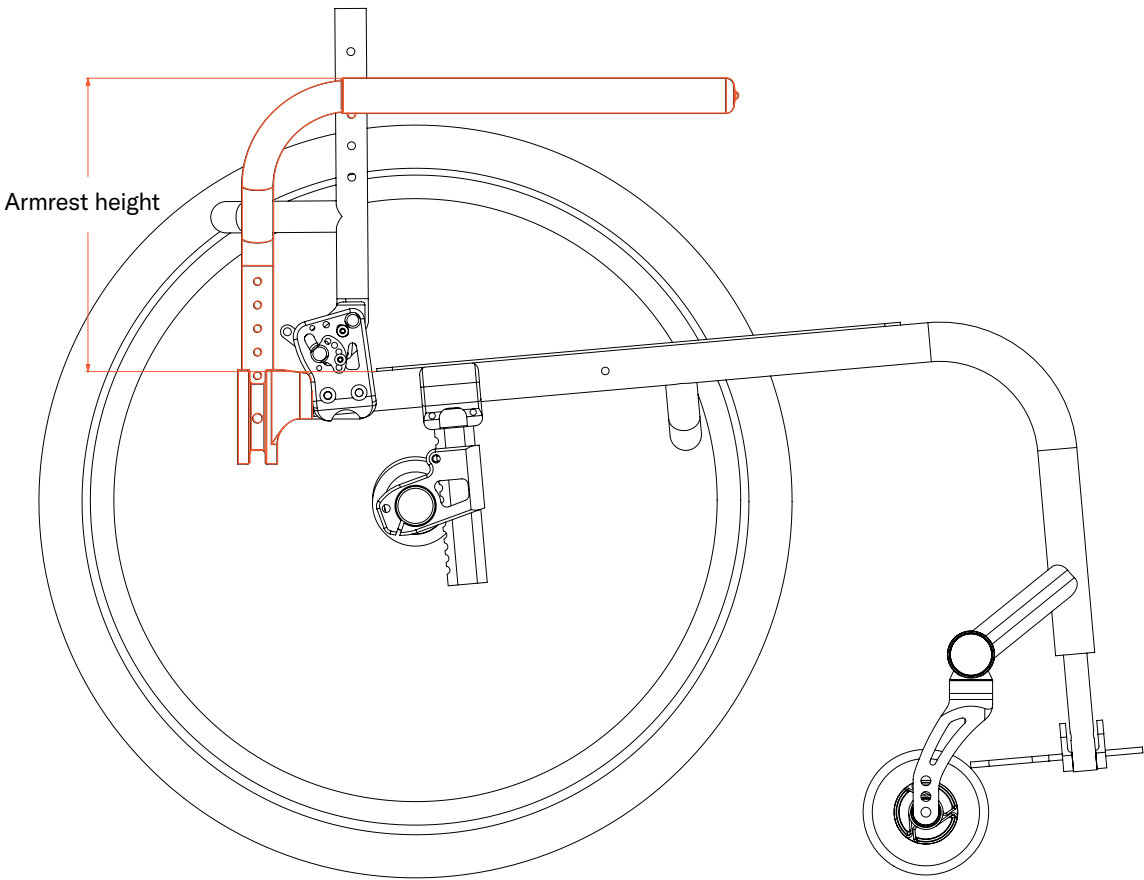
**Required information**

(Insert required information for CMD-E to complete this request)

Height: \_\_\_\_\_

Length (4" more than standard is maximum): \_\_\_\_\_

Angle from top tube to floor if not standard: \_\_\_\_\_

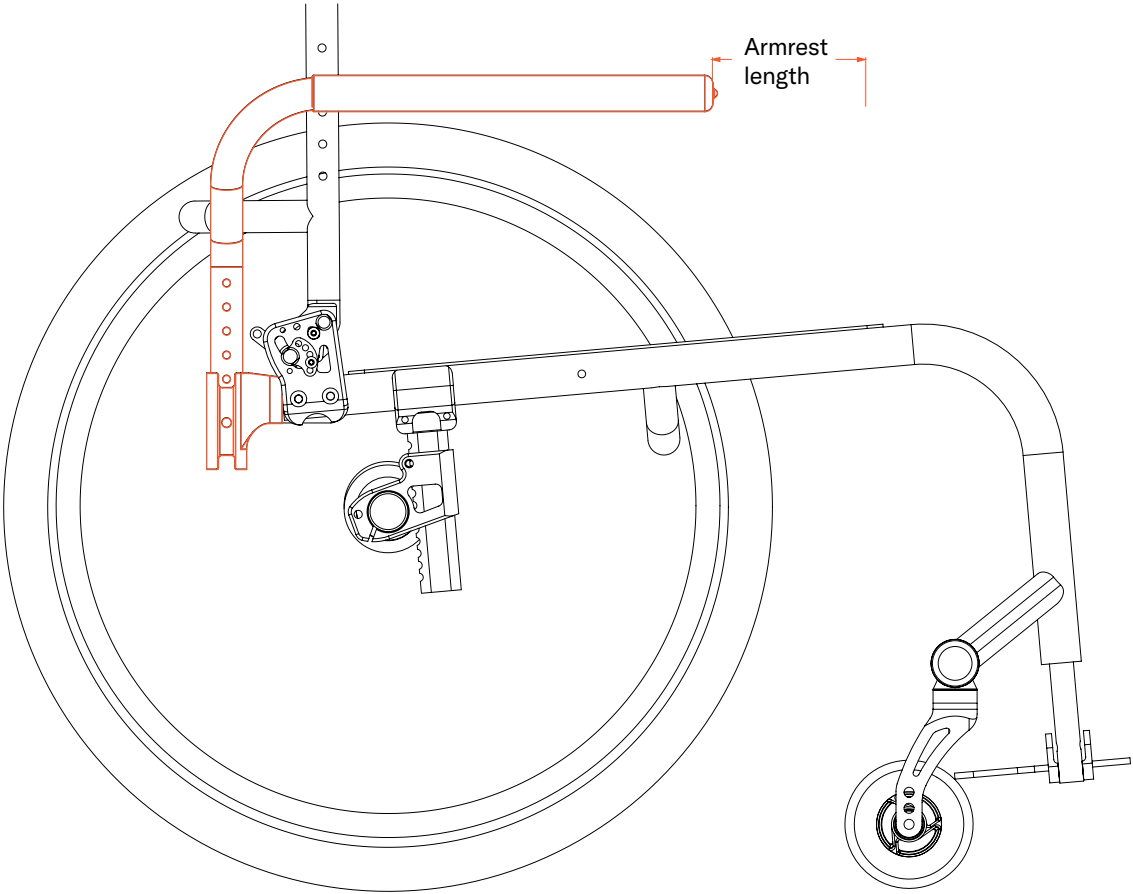


## Special Instructions



⚠ NOTE: Permobil's warranty does not cover Creative Mobility Division frames and frame components, unless Permobil determines that the frame or frame component was defectively manufactured.

# Adapted length swing-away armrest with foam cover CMD #52



EZ-Ti ID \_\_\_\_\_

PO# \_\_\_\_\_

**Clinical rationale**

Modification indicated for individuals who present with upper extremity shape and positioning that the standard swing-away armrest is not long enough for and does not provide the appropriate support.

**Available on:**

TiLite TR, TiLite TRA, TiLite Aero T, TiLite ZR, TiLite ZRA, TiLite Aero Z, TiLite Aero X, TiLite 2GX

**Notes:**

- Select length based off of std arm length (see CMD 53).
- May not work with all chair configurations.
- Maximum length is 4" more than standard.

**Required information**

(Insert required information for CMD-E to complete this request)

Length Longer/Shorter than standard

Longer: \_\_\_\_\_ (4" max length increase)

OR

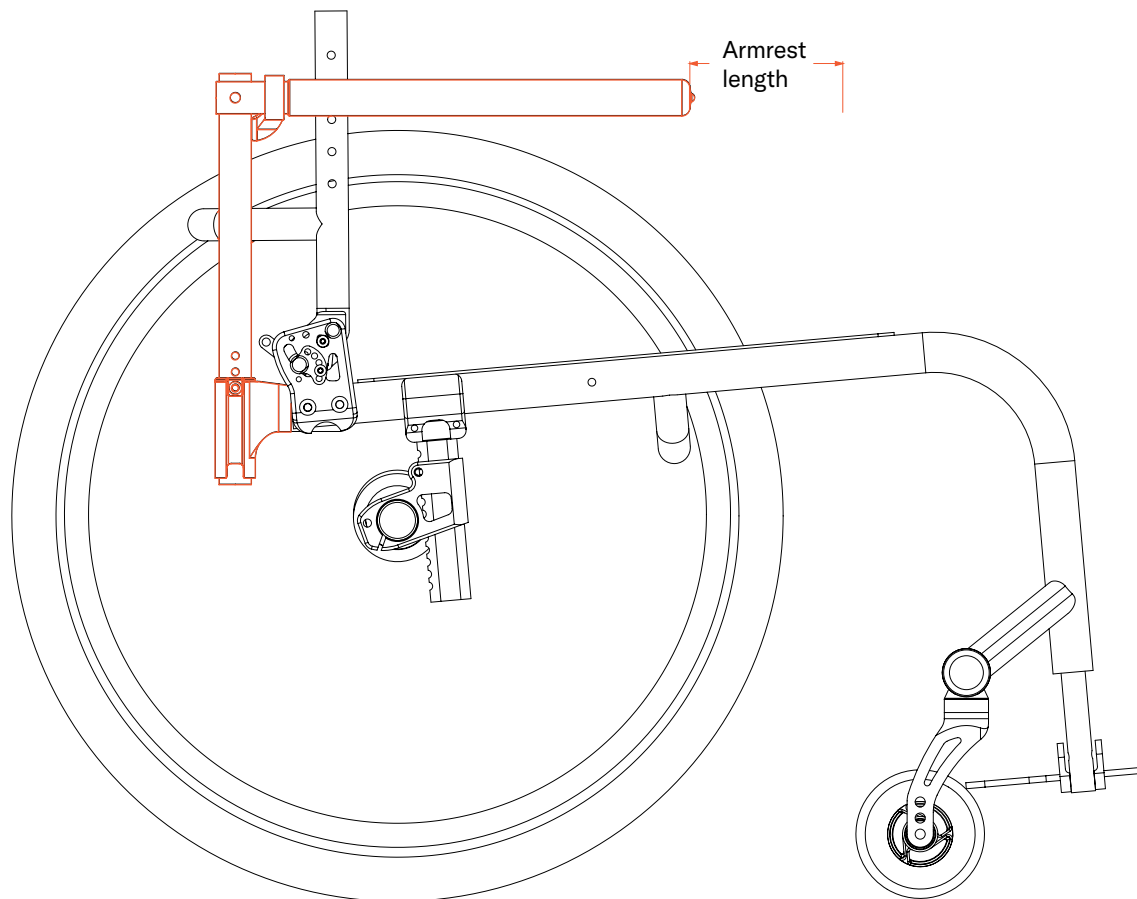
Shorter: \_\_\_\_\_

Special Instructions



⚠ NOTE: Permobil's warranty does not cover Creative Mobility Division frames and frame components, unless Permobil determines that the frame or frame component was defectively manufactured.

# Adapted length flip-back swing-away armrest with foam cover CMD #53



EZ-Ti ID \_\_\_\_\_

PO# \_\_\_\_\_

## Clinical rationale

Modification indicated for individuals who present with upper extremity shape and positioning that the standard swing-away armrest is not long enough for and does not provide the appropriate support.

## Available on:

TiLite TR, TiLite TRA, TiLite Aero T, TiLite ZR, TiLite ZRA, TiLite Aero Z, TiLite Aero X, TiLite 2GX

## Notes:

- Select length based off of standard armrest length (see CMD 53).
- May not work with all chair configurations.
- Maximum length is 4" more than standard.

## Required information

(Insert required information for CMD-E to complete this request)

Length Longer than standard: \_\_\_\_\_ (4" max)

## Special Instructions



⚠ NOTE: Permobil's warranty does not cover Creative Mobility Division frames and frame components, unless Permobil determines that the frame or frame component was defectively manufactured.

# Standard (10" long) deskarm pad on swing-away tubular armrest CMD #58

EZ-Ti ID \_\_\_\_\_

PO# \_\_\_\_\_

## Clinical rationale

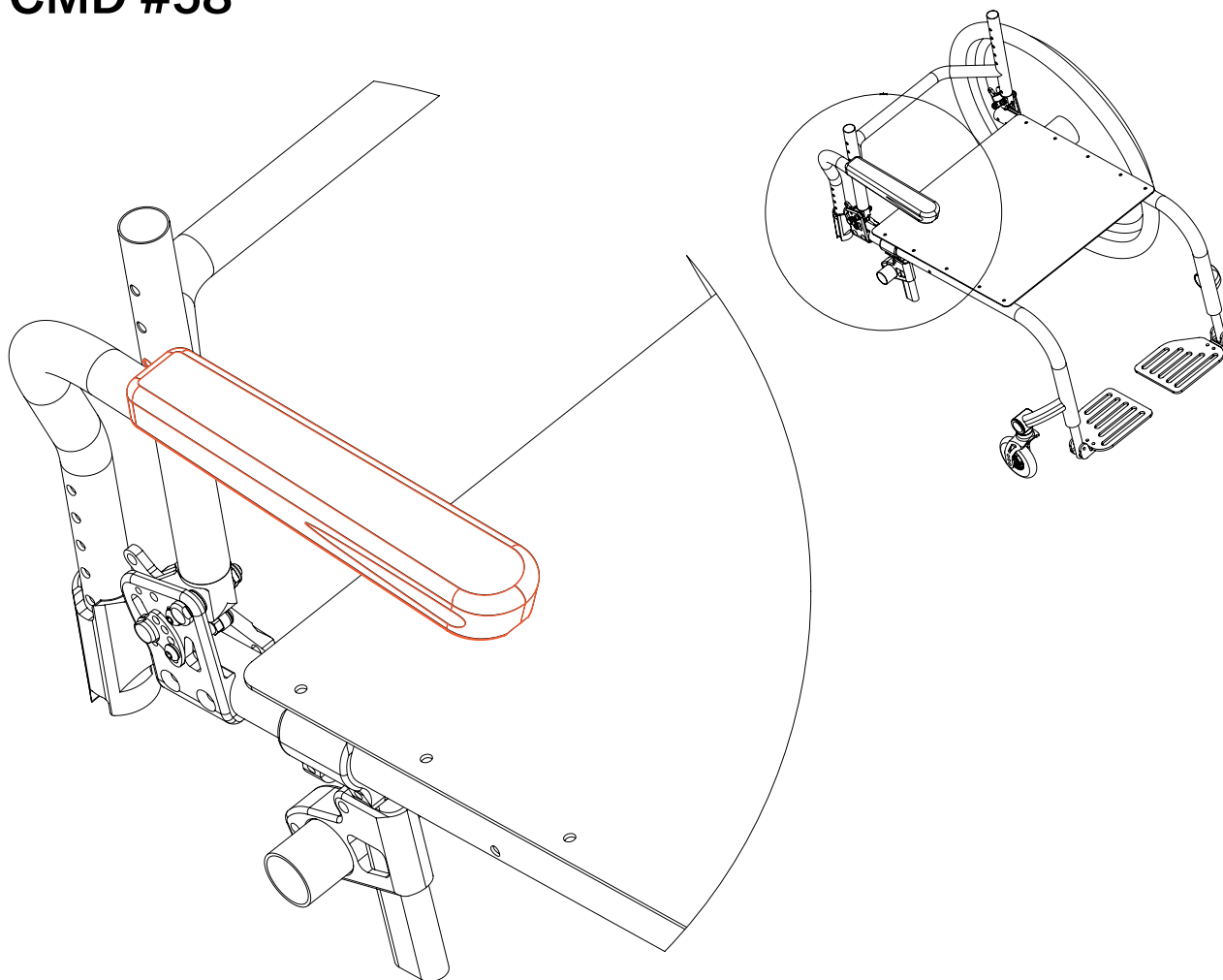
Modification for additional support for upper extremity positioning and comfort as well as functionally for repositioning and transfers while maintaining a more compact and lightweight design.

## Available on:

TiLite TR, TiLite TRA, TiLite ZR, TiLite ZRA, TiLite Aero T, TiLite Aero Z, TiLite Aero X, TiLite 2GX

## Notes:

- Swing-away armrests need to be ordered with this option.
- May not work with all chair configurations.

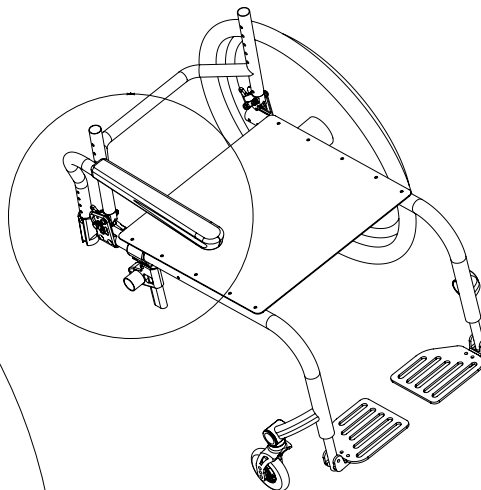
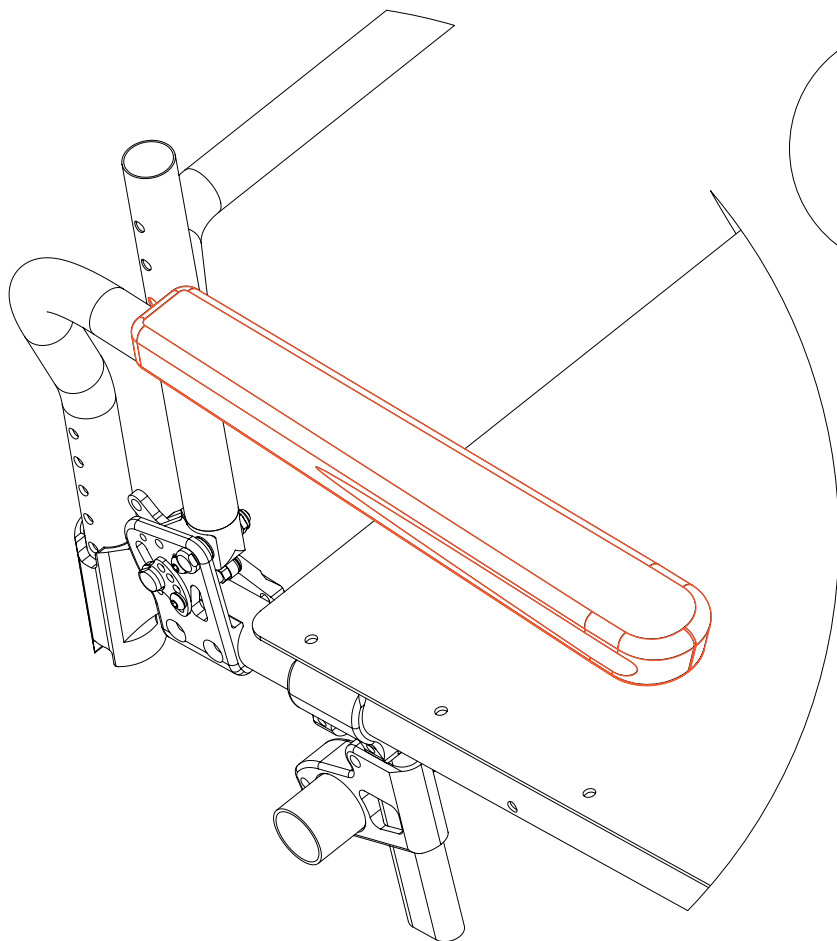


## Special Instructions

**permobil**

⚠ NOTE: Permobil's warranty does not cover Creative Mobility Division frames and frame components, unless Permobil determines that the frame or frame component was defectively manufactured.

# Full (14" long) desk arm pad on swing-away tubular armrest CMD #59



EZ-Ti ID \_\_\_\_\_

PO# \_\_\_\_\_

## Clinical rationale

Modification indicated for additional support for upper extremity positioning and comfort as well as functionally for repositioning and transfers while maintaining a more compact and lightweight design.

## Available on:

TiLite TR, TiLite TRA, TiLite ZR, TiLite ZRA, TiLite Aero T, TiLite Aero Z, TiLite Aero X, TiLite 2GX

## Notes:

- Folding backrest required on rigid frames.
- Swing-away armrests need to be ordered with this option.
- Full length desk arm pad attached to swing-away armrest tube.
- May not work with all chair configurations.

## Special Instructions



⚠ NOTE: Permobil's warranty does not cover Creative Mobility Division frames and frame components, unless Permobil determines that the frame or frame component was defectively manufactured.



# Standard (10" long) desk arm pad on flip-back tubular armrest CMD #66

EZ-Ti ID \_\_\_\_\_

PO# \_\_\_\_\_

## Clinical rationale

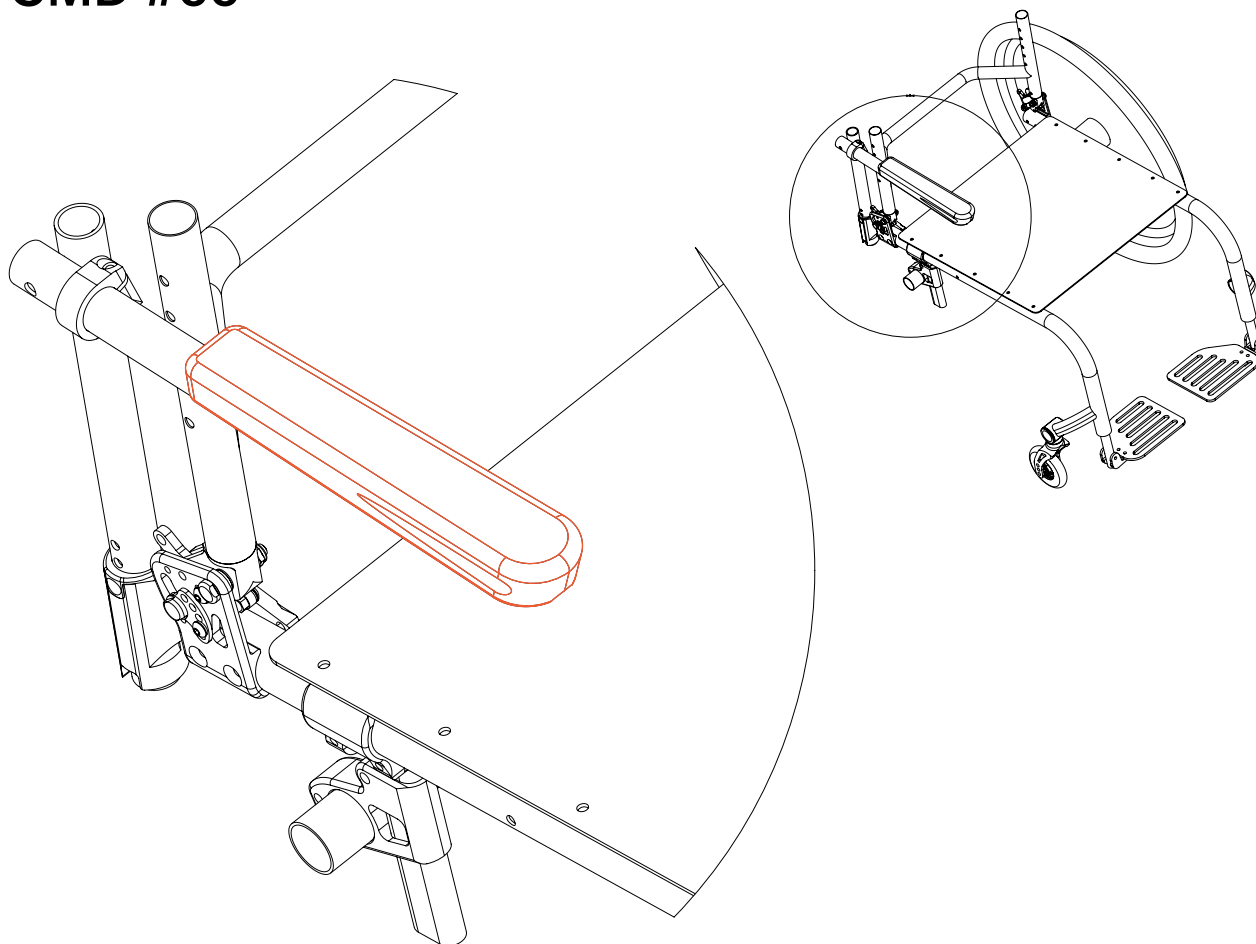
Modification indicated for additional support for upper extremity positioning and comfort as well as functionally for repositioning and transfers while maintaining a compact and lightweight flip-back design.

## Available on:

TiLite TR, TiLite TRA, TiLite ZR, TiLite ZRA, TiLite Aero Z, TiLite Aero T, TiLite Aero X, TiLite 2GX

## Notes:

- May not work with all chair configurations.

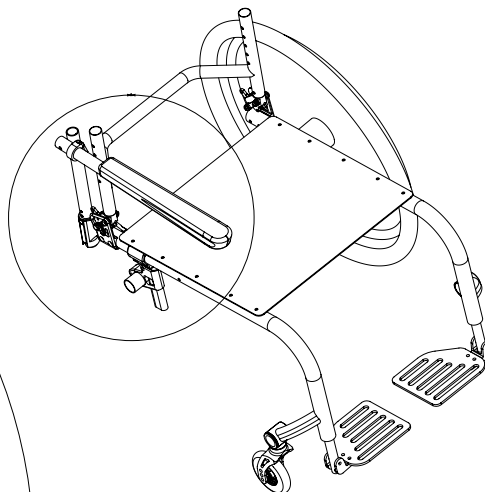
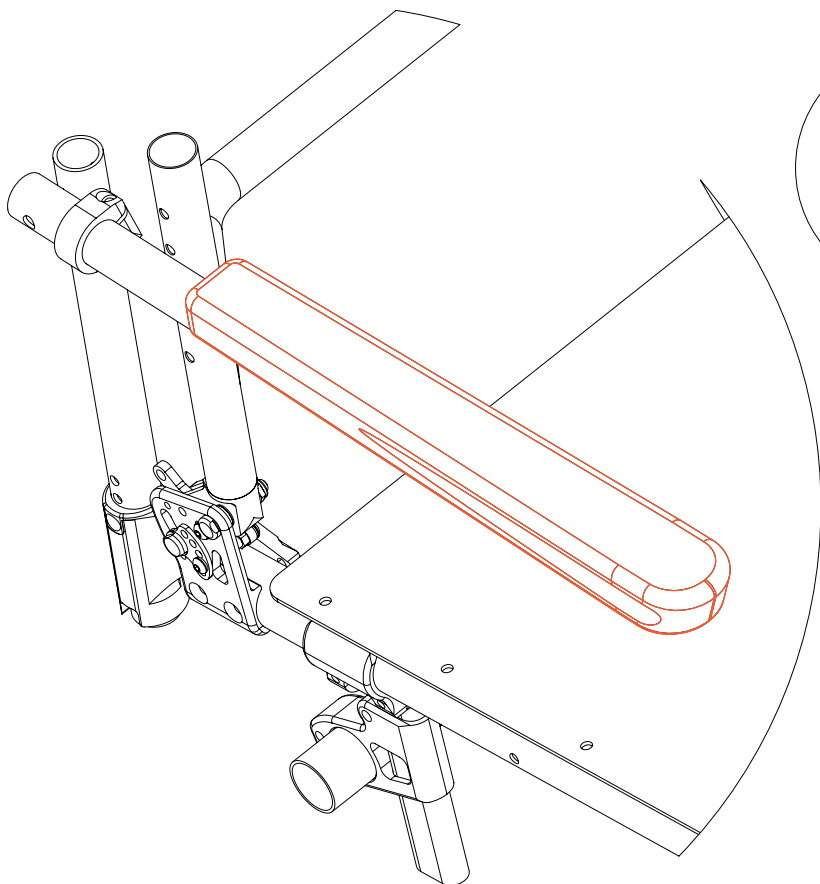


## Special Instructions



⚠ NOTE: Permobil's warranty does not cover Creative Mobility Division frames and frame components, unless Permobil determines that the frame or frame component was defectively manufactured.

# Standard (14" long) desk arm pad on flip-back tubular armrest CMD #67



EZ-Ti ID \_\_\_\_\_

PO# \_\_\_\_\_

## Clinical rationale

Modification indicated for additional support for upper extremity positioning and comfort as well as functionally for repositioning and transfers while maintaining a compact and lightweight flip-back design.

## Available on:

TiLite TR, TiLite TRA, TiLite ZR, TiLite ZRA, TiLite Aero Z, TiLite Aero T, TiLite Aero X, TiLite 2GX

## Notes:

- May not work with all chair configurations.

## Special Instructions



⚠ NOTE: Permobil's warranty does not cover Creative Mobility Division frames and frame components, unless Permobil determines that the frame or frame component was defectively manufactured.

TiLite manual wheelchairs

# Creative Mobility Division

2701 West Court St, Pasco, WA 99301  
Phone +1 509 586 6117 | 800 545 2266



permobil