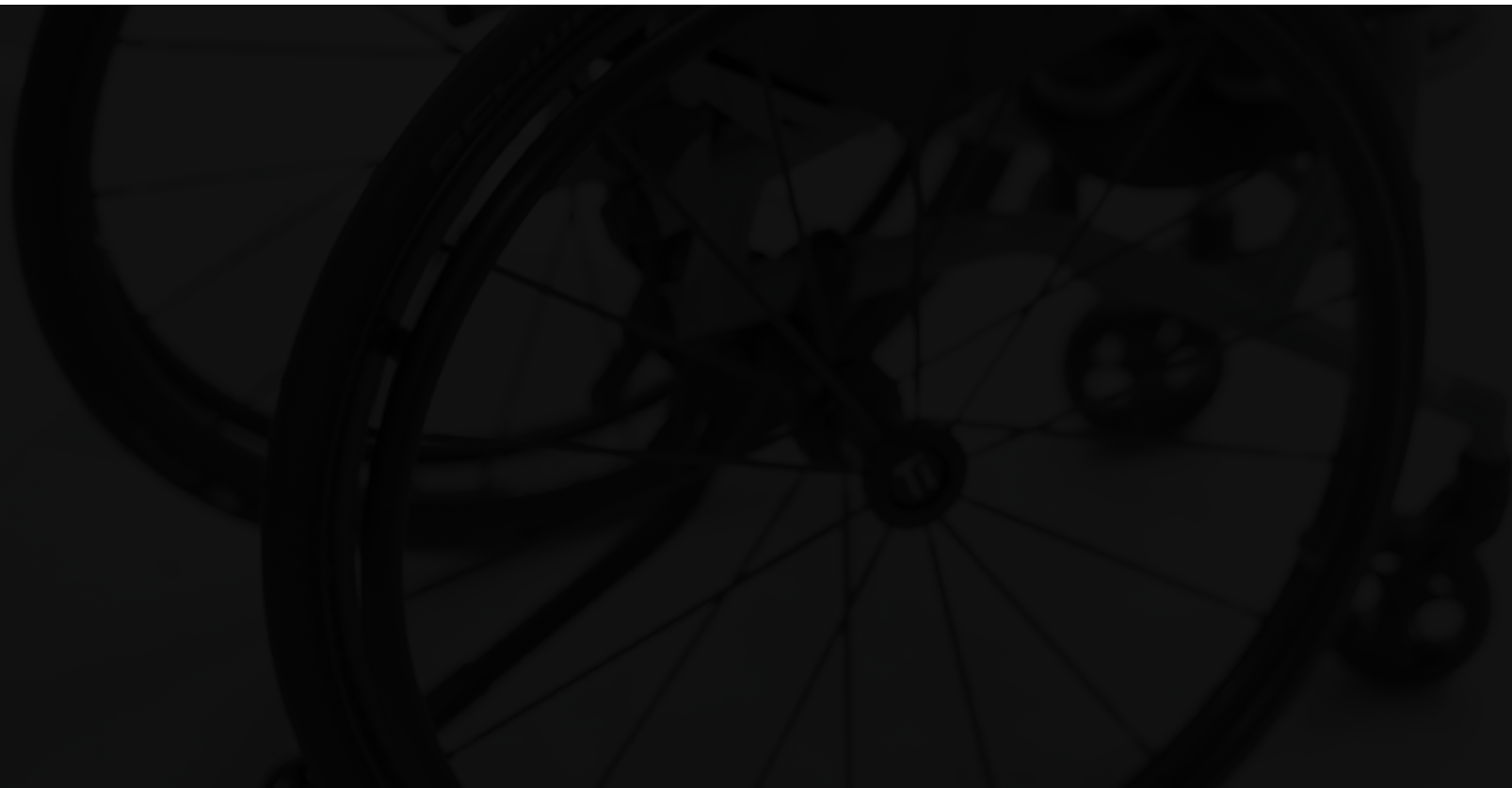


TiLite manual wheelchairs | Creative Mobility Division

Accessory options



How to order

Catalog

1. Identify CMDs you wish to order and fill out. Please confirm compatibility with the chair you're ordering.
2. Fill out the catalog page corresponding to that CMD with the required information for us to complete your request.
 - EZ-Ti ID, PO#, or Quote# if available.
 - Measurements, selections, and special instructions if necessary.
3. Email the filled out page(s) to chairs.tilite@permobil.com and include Order Form if applicable.

Order Forms

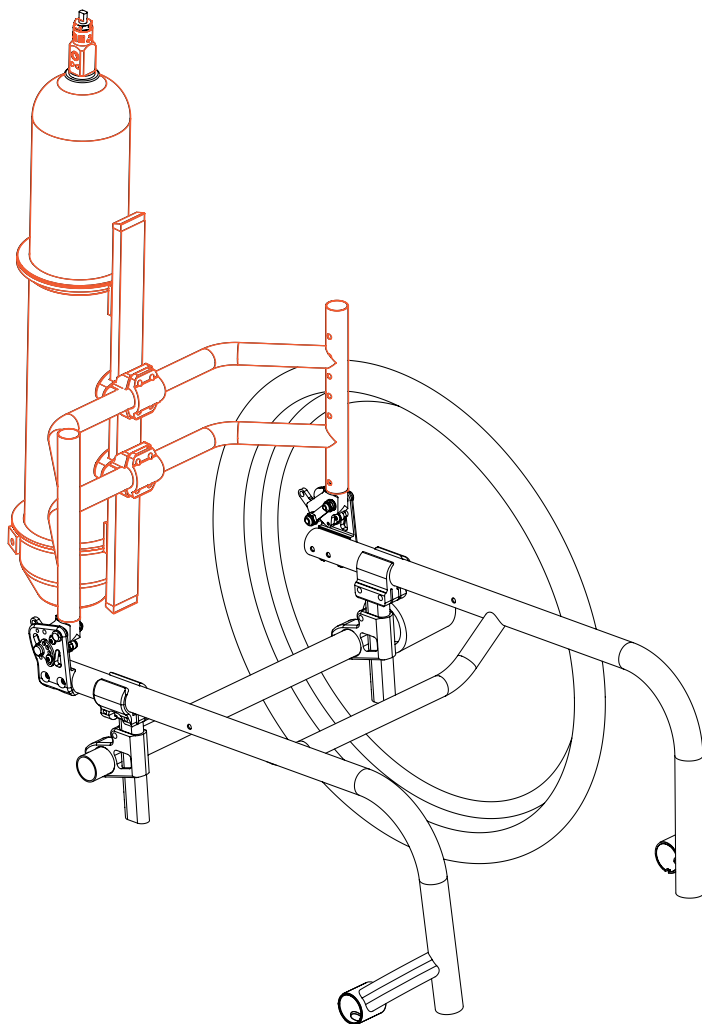
1. Identify CMDs you wish to order and fill out. Please confirm compatibility with the chair you're ordering.
2. In the "Notes" section on the last page of the order form, include the following information:
 - CMD number(s) being requested.
 - Measurements, selections, and special instructions if necessary.
3. Submit Order Form via email (chairs.tilite@permobil.com) or fax (509) 586-2413.

EZ-Ti

1. Identify CMDs you wish to order and fill out. Please confirm compatibility with the chair you're ordering.
2. In the "CMD" section on the Summary page of EZ-Ti, include the following information:
 - CMD number(s) being requested.
 - Measurements, selections, and special instructions if necessary.
3. Submit quote request via EZ-Ti.

Please note, custom requests may impact quote turnaround time and chair build time. Pricing for these custom options may vary based on the amount of added labor and material costs.

Oxygen tank holder (rigid chairs) CMD #1



EZ-Ti ID _____

PO# _____

Clinical rationale

Modification indicated for clients who require supplemental oxygen to maintain oxygen saturation levels about 90%.

Available on:

TiLite TRA, TiLite ZRA, TiLite Aero T, TiLite Aero Z, TiLite TWIST

Notes:

- Must have a medium or taller backrest.
- Chair requires two backrest loops.
- Backrest loops must be 4" or deeper.
- Anti-tips are required.
- May not work with all chair configurations.
- Not available with bolt on push handles.
- Not available with short backrest ranges.
- Not available with tie down options.
- Available to hold 4.3" tanks or smaller. (Tank sizes A(M-4), B(M-6), C(M-9), D(M-15), E(M-24), M-2, ML-6 and M-7)
- Option to mount in right, left or center.
- Note: For TWIST:
 - Center Mount only.
 - The backrest will not grow.

Required information

(Insert required information for CMD-E to complete this request)

Mounting location (choose one): ☐ Left ☐ Right ☐ Center

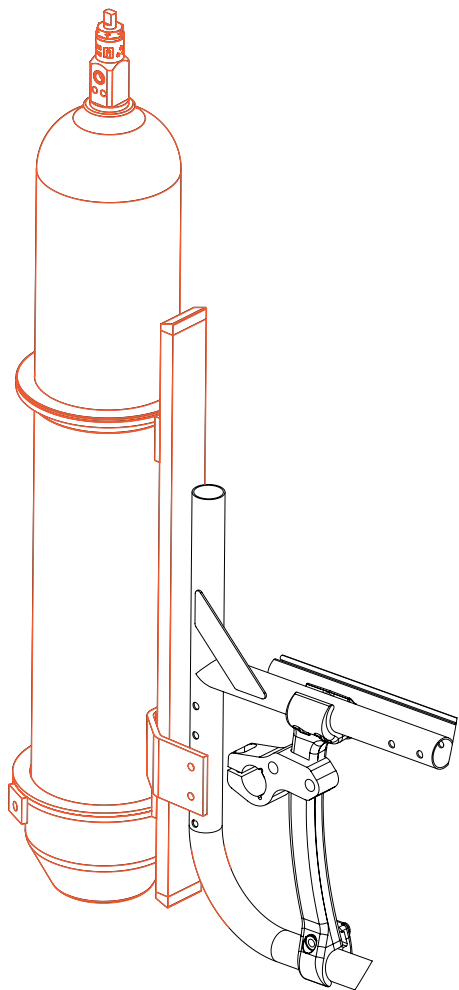
Special Instructions

permobil

⚠ NOTE: Permobil's warranty does not cover Creative Mobility Division frames and frame components, unless Permobil determines that the frame or frame component was defectively manufactured.

Oxygen tank holder (folding chairs)

CMD #2



EZ-Ti ID _____

PO# _____

Clinical rationale

Modification indicated for clients who require supplemental oxygen to maintain oxygen saturation levels about 90%.

Available on:

TiLite Aero X, TiLite 2GX

Notes:

- N/A with bolt-on push handles or tie down options.
- Anti-tips are required with this option.
- Will not work with User-friendly Anti-tips.
- Only available in 4.3" tank sizes or smaller. (Tank sizes A(M-4), B(M-6), C(M-9), D(M-15), E(M-24), M-2, ML-6 and M-7.
- Oxygen tank can be mounted on right side or left side of frame.
- May not work with all chair configurations.

Required information

(Insert required information for CMD-E to complete this request)

☐ Tank size meets the above parameters

Mounting location (choose one): ☐ Left OR ☐ Right

Special Instructions



⚠ NOTE: Permobility's warranty does not cover Creative Mobility Division frames and frame components, unless Permobility determines that the frame or frame component was defectively manufactured.

Travel aids CMD #39

EZ-Ti ID _____

PO# _____

Clinical rationale

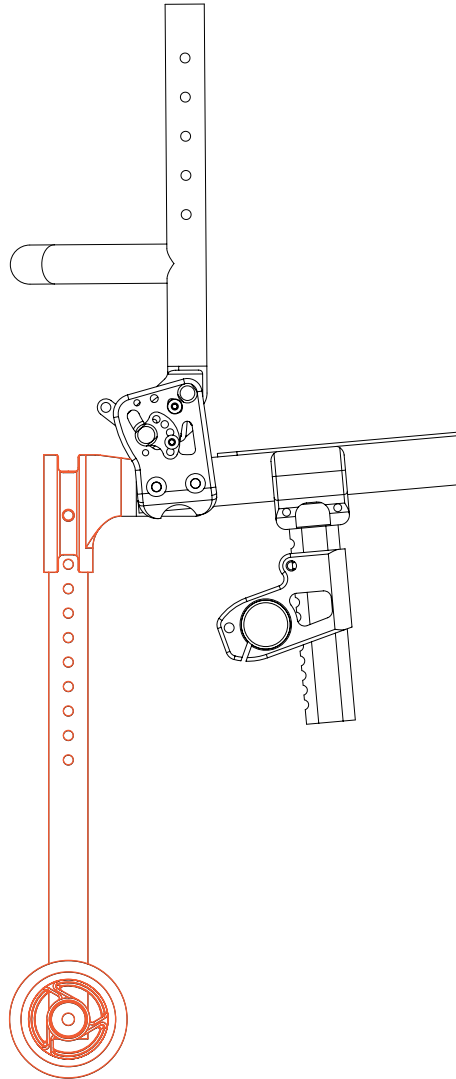
Modification indicated for independence in carrying luggage while traveling.

Available on:

TiLite TR, TiLite TRA, TiLite ZR, TiLite ZRA, TiLite Aero T, TiLite Aero Z

Notes:

- Not available with Tubular Armrests.
- 250 lb weight limit.
- May not work with all chair configurations.



Special Instructions

permobil

⚠ NOTE: Permobil's warranty does not cover Creative Mobility Division frames and frame components, unless Permobil determines that the frame or frame component was defectively manufactured.

TWIST style anti-tip on rigid chairs

CMD #47

EZ-Ti ID _____

PO# _____

Clinical rationale

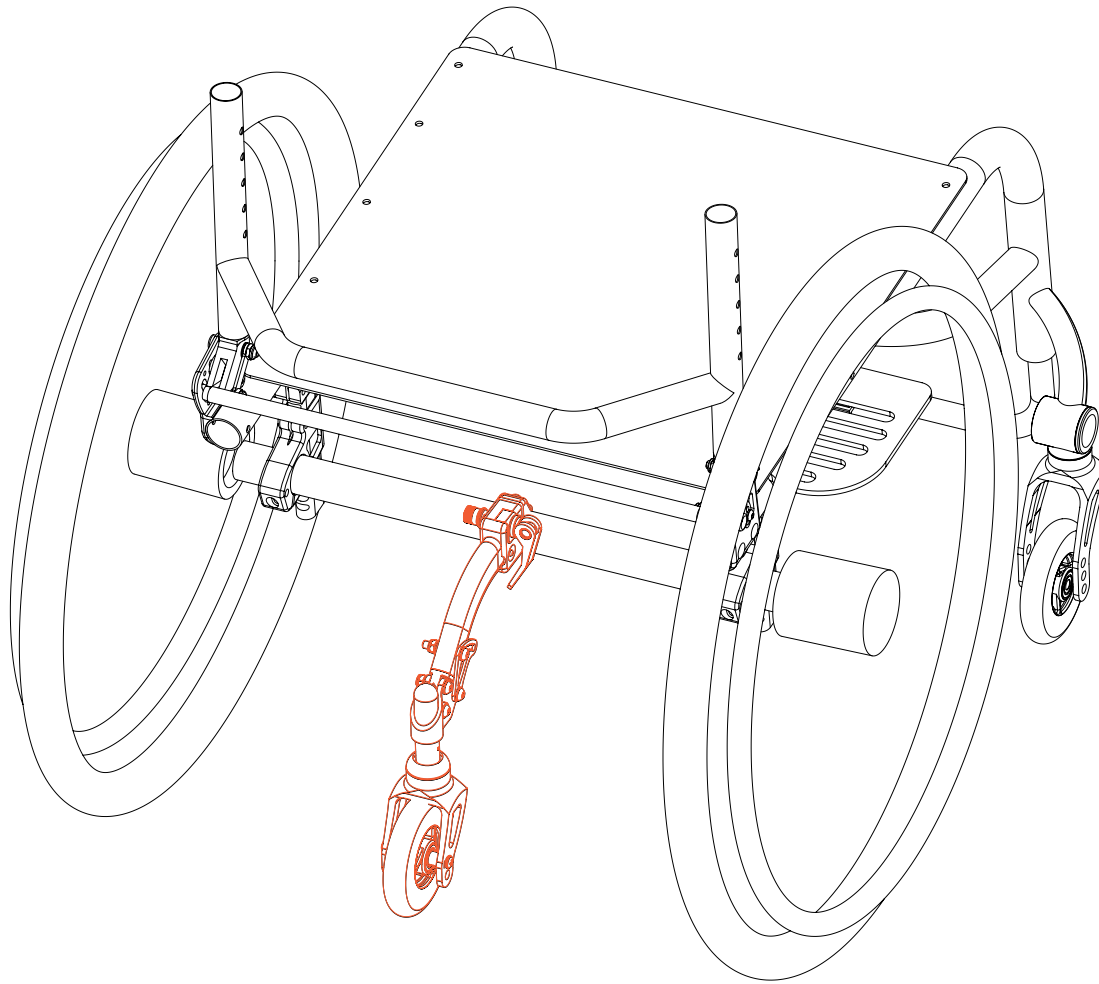
This modification is indicated for individuals who require a maneuverable and supportive anti-tipper when their front wheels are off of the ground.

Available on:

TiLite TR, TiLite TRA, TiLite ZR, TiLite ZRA, TiLite Aero T, TiLite Aero Z

Notes:

- Only available on rigid chairs.
- Maximum user weight of 165 lb.
- Maximum chair width of 15".
- May not work with all chair configurations.
- The camber tube for this CMD only comes in black anodize.



Special Instructions



⚠ NOTE: Permobil's warranty does not cover Creative Mobility Division frames and frame components, unless Permobil determines that the frame or frame component was defectively manufactured.

Titanium single swivel caster anti-tip CMD #69

EZ-Ti ID _____

PO# _____

Clinical rationale

This modification is indicated for individuals who require a maneuverable and supportive anti-tipper when their front wheels are off of the ground. This modification provides the lightweight strength of titanium.

Available on:

TiLite TR, TiLite ZR, TiLite ZRA, TiLite Aero Z, TiLite TRA, TiLite Aero T, TiLite Aero X, TiLite 2GX

Notes:

- Only available on Rigid Frames.
- May not work with all chair configurations.
- Design is subject to our stability requirements.
- Wheel to floor (dimension A) = 3/8" in lowest position.
- It is recommended that when the anti-tip is used that wheel be, at most, 3/8" from the floor.

Required information

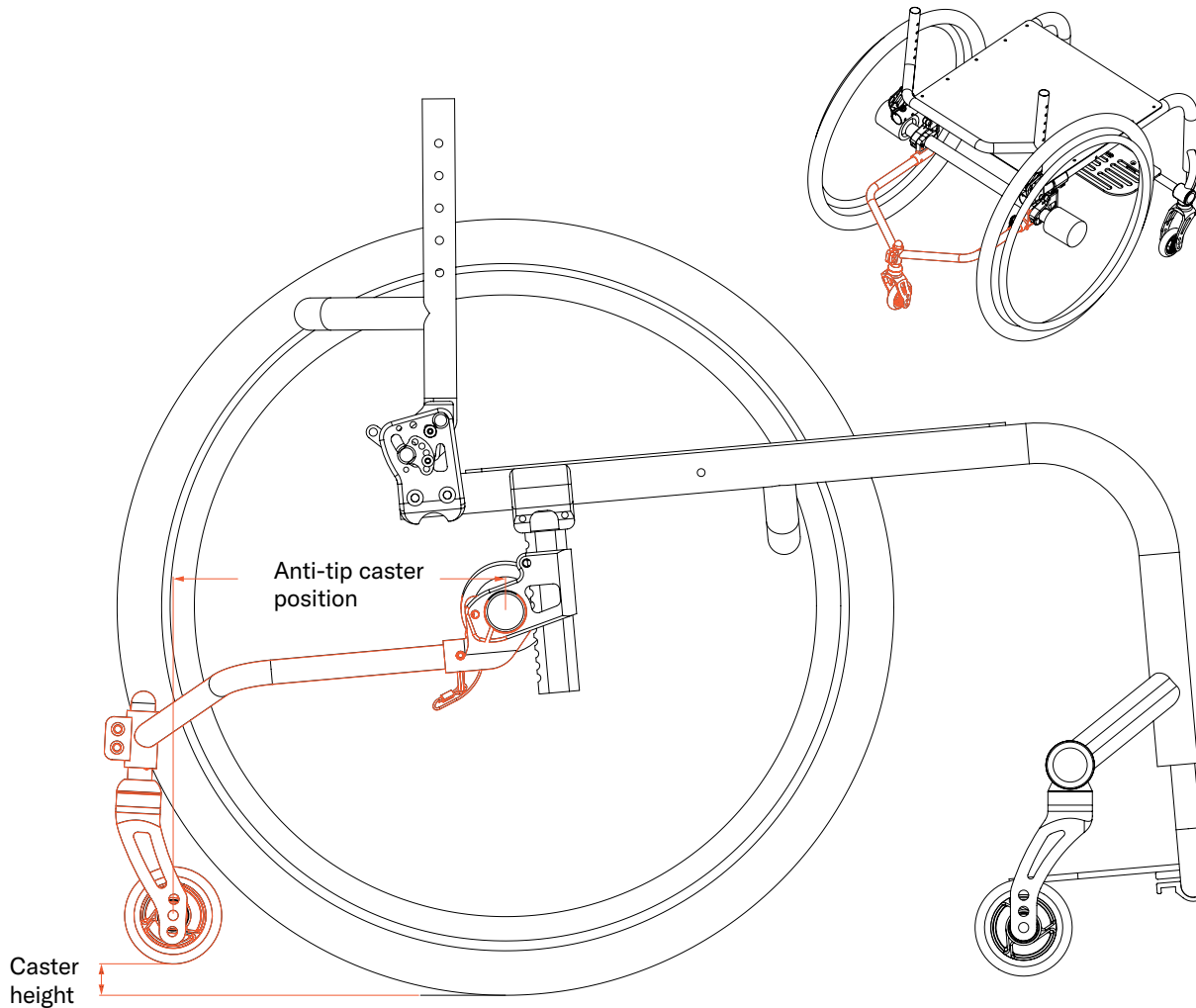
(Insert required information for CMD-E to complete this request)

Select Style:

☐ Flip-up ☐ Fixed

Anodized Color desired on anti-tip fork: (select color from order form) _____

Caster Size on 5th wheel (3, 4, 5 or 6-inch) _____
(3-inch caster wheel will be the default if no size is selected)



Special Instructions

permobil

⚠ NOTE: Permobil's warranty does not cover Creative Mobility Division frames and frame components, unless Permobil determines that the frame or frame component was defectively manufactured.

TiLite manual wheelchairs

Creative Mobility Division

2701 West Court St, Pasco, WA 99301
Phone +1 509 586 6117 | 800 545 2266



permobil