



## How Permobil Can Support You

Providing rental services, sales, and support for users, whanau and carers.  
Bringing independence by providing the best outcomes for individual needs.

SCAN ME



permobil

# Our Rental Services

Our Permobil Rental team work together with users, whanau, care facilities, and health professionals, to achieve the best possible outcomes. We believe in providing solutions that meet the unique needs of every individual. Clinical evidence, research and innovation are at the core of Permobil.

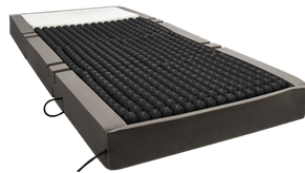
All rental equipment is maintained to the highest standards by our highly skilled Technical Support team. The team are there to provide advice, repairs, and maintenance for all Permobil equipment. We deliver, maintain, support and collect as required.

Our rental team provide support and products nationwide and are very responsive to enquiries. We assist with short and long term rentals, providing flexibility for uncertain situations and changing needs. People can also rent our products to consider their effectiveness before purchasing for themselves or their loved ones.

**We can support with the following:**



**Beds**



**Mattresses**  
(Static and air alternating options)



**Seating & Positioning**



**Power Wheelchairs**



**Manual Wheelchairs**



**Manual Handling**

# Our Sales Services

We are recognised for selling quality manual and power wheelchair, seating and positioning options including ROHO, mattresses and power assist devices.

Our sales representatives can go through all of these options with you. Highlighted below are options we know provide assistance in the aged care domain. Please note our full range of ROHO can be found on our website, just scan the QR code on the front page or go to [www.permobil.com/en-nz](http://www.permobil.com/en-nz).

## About ROHO®

Pressure injuries can be a painful and debilitating medical complication, and under unfavourable circumstances, can develop within minutes to hours. However, preventing their occurrences may be done through early intervention.

ROHO's DRY FLOATATION technology is based on hydrostatics which allows the cushion to mimic the pressure redistribution properties of water. The technology follows four fundamentals for ensuring optimal skin protection, stability, and positioning.

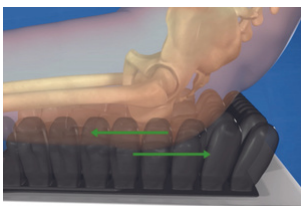
Benefits include:



### Lets you in

#### Low surface tension

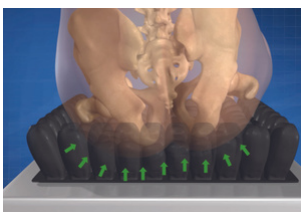
Our unique design lets you easily sink into the cushion, reducing pressure and discomfort on the skin and soft tissues.



### Works with you, not against you

#### Low friction and shear

Nothing feels like a ROHO cushion. The smooth surface reduces shear and friction without compromising your safety and comfort.



### Matches your shape

#### Constant restoring forces

Water shapes perfectly to the body, so mimicking it allows the cushion to match your individual shape. The flexible cells can provide constant and even forces across all contact areas with the body.



### Moves with you

#### Six degrees of freedom

No matter what you are doing, your ROHO cushion will constantly adapt to the changes that happen throughout each day and over time. The air cells follow your motions, giving you support and freedom of movement.

# Cushions



## ROHO QUADTRO SELECT® Cushion

QUADTRO SELECT is the most clinically advanced cushion in the ROHO product family, constantly adapting to your needs or activities. With the exclusive ISOFLO Memory Control and independent four-compartment design, you have the ultimate control over the inflation levels across your cushion, making it easy to ensure you are positioned properly.

The interconnected air cells envelop your body, delivering maximum immersion and positioning, while protecting you from skin and soft tissue breakdown.



## ROHO® Single Compartment

The Single Compartment interconnected air cells allow you to be immersed for maximum pressure redistribution while decreasing friction and shear.

These cushions come in three different cell heights depending on your needs and are easy to set up using the single valve and air pump.



## ROHO® AirLITE® Cushion

The AirLITE cushion is a non-adjustable, maintenance-free foam cushion with a ROHO air insert that conforms to your body while also preventing you from bottoming out in your cushion. The gentle contour of the leg trough helps you maintain the right position and posture, and lets you feel more secure.



## ROHO® MOSAIC® Cushion

The MOSAIC cushion provides the benefits of interconnected large air cells that allow you to sink comfortably into the cushion. It is an easy to inflate, lightweight cushion that protects your skin and soft tissues.



# Mattresses



## **ROHO® SOFFLEX 2® Mattress Overlay System**

The ROHO SOFFLEX 2 Mattress Overlay is a non-powered, airfilled, adjustable, zoned, reactive, full support surface that is intended to conform to an individual's shape to provide skin/soft tissue and deep tissue injury protection and an environment to facilitate wound healing.

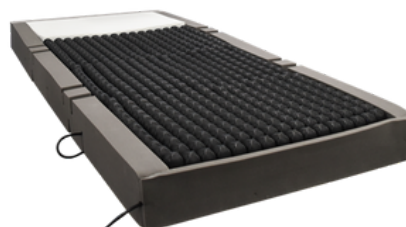
The SOFFLEX 2 has three sections for an individualized fit. Each of the three sections easily snap together to form a complete mattress overlay and can be adjusted per section to address the specific needs of the individual's body shape and size.



## **Forté Zephair Gentle Critical Care Air System**

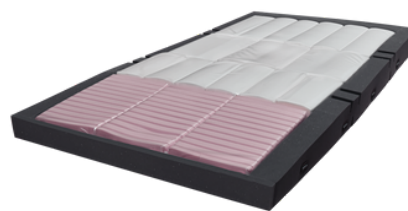
Tried and trusted by facilities and homecare alike, the Zephair provides gentle critical care, aides in pressure injury prevention, pain management, comfort and compliance, stability, and safety.

By optimising patient function, and reducing the risk of pain and injury, the Zephair increases dignity, independence, and cognitive welfare for vulnerable patients.



## **Forté Sovereign ROHO® Pressure Care Modular Air Mattress**

Whether for specific pain management, palliative care ward usage or a complex client in home care, you can adapt the Sovereign ROHO® Modular Air Mattress to any configuration you require. Deep immersion is achieved without compromising mobility with a unique engineered responsive foam called Airoform Response. High-performance foams used in the construction of the mattress, combined with the Premiflex Ultra Premium Breathe Pressure Care cover ensures ultimate longevity and consistency of care.



## **Forté Alaise Advanced Hybrid Static Care Support Surface**

The Forté Alaise is an advanced Hybrid Static Care Support Surface combining together the pressure redistribution benefits of both foam and air. Utilising a series of 13+ individual Air Cells, it offers excellent comfort, anatomical support and pressure redistribution.

The Alaise is ideal for long-term care applications where maximum pressure care is required with virtually zero maintenance.

# Our Core Values



**Tuatahi**  
**User First**



**Ngākau Whiwhita**  
**Passionate**



**Whakawhirinaki**  
**Trusted**



**Hautūtanga**  
**Leading**

## Contact Us

### Auckland

181A McLeod Road, Te Atatu South  
Auckland, 0610

PO Box 121454, Henderson,  
Auckland 0650

Email: [sales.nz@permobil.com](mailto:sales.nz@permobil.com)  
Email: [rental.nz@permobil.com](mailto:rental.nz@permobil.com)

Phone: 0800 115 222

### Wellington

15 Raroa Road, Hutt Central,  
Lower Hutt, 5010

Email: [rentalnz.nth@permobil.com](mailto:rentalnz.nth@permobil.com)

Phone: 0800 363 123

### Christchurch

Unit 3, 114 Sawyers Arms Road,  
Northcote, Christchurch, 8052

PO Box 5262, Papanui,  
Christchurch, 8542

Email: [rentalnz.sth@permobil.com](mailto:rentalnz.sth@permobil.com)

Phone: 03 354 9239