



## Smart Check™

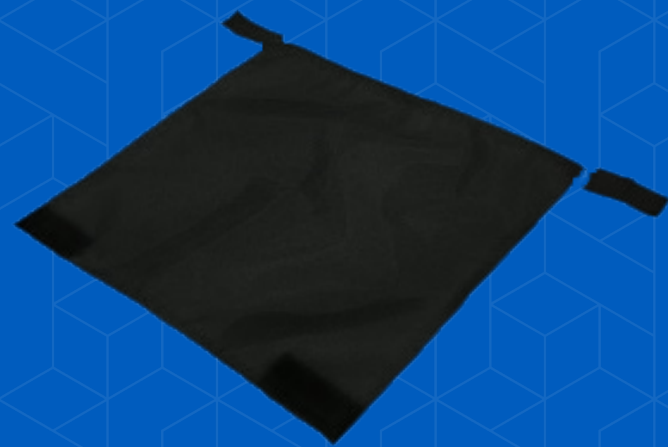
The world's first personal electronic cushion monitoring system, Permobil's exclusive Smart Check device can help determine the proper inflation level for your ROHO® Sensor Ready cushion.

### Key benefits:

- Stores your inflation range
- Press to check inflation level
- Real time feedback
- Ability to reset
- Detachable for storage

## Cushions

# Comparison matrix



## Privacy Shield

The ROHO® Privacy Shield is perfect for anyone who wants coverage between the bottom of the back support and the seat of their wheelchair. Designed to attach directly to the back canes of a wheelchair, it is easy to attach and detach for cleaning.



**Comfort Curve®**



**Comfort Elements® with Gel**



**Comfort Support Pro 7 Series**



**ROHO® MOSAIC®**



**Comfort Ascent**



**ROHO® AirLITE®**



**Comfort M2 Zero-Elevation M2 Anti-Thrust**



**Comfort Embrace™ Zero-Elevation Embrace™ Anti-Thrust**

<b>Widths</b>	8" - 24" (1" increments)	16"-24" (1" increments)	22"-30" (2" increments)	16" - 20" (1" increments)	16"- 24" (1" increments)	13" - 20" (1" increments)	10"-24" (1" increments)	10"-24" (1"increments)
<b>Depths</b>	8"-20" (1" increments)	16"-20" (1" increments)	18" and 20"	16" - 18" (1" increments)	16"-20" (1" increments)	13" - 20" (1" increments)	10"- 24" (1" increments)	10" - 24" (1" increments)
<b>Cushion Thickness Dimensions</b>	3" 2.25" inferior thigh	2" or 3"	3.5"	3"	4" 3" inferior thigh	2" - 3.75" contoured	Zero-elevation: ≤ 16" x 14", 3" ≥ 16" x 16", 4.25"  Anti-thrust: ≤ 16" x 14", 2.75" ≥ 16" x 16", 3.75"	Zero-elevation: ≤ 16" x 14", 3" ≥ 16" x 16", 4"  Anti-thrust: ≤ 16" x 14", 3" ≥ 16" x 16", 3"
<b>Cushion Materials</b>	Foam	Foam, QuadraGel® insert	Foam Optional QuadraGel® insert	Flowing Air	Foam	Foam, Air insert	Foam, QuadraGel® insert	Foam
<b>Cover Options</b>	COMFORT-TEK® STRETCH-AIR®	COMFORT-TEK® STRETCH-AIR®	Solace fabric with Kwik-Strap	Two-way stretch Heavy Duty cover	COMFORT-TEK® STRETCH-AIR®	Fluid-resistant, two-way stretch	COMFORT-TEK® STRETCH-AIR® COMFORT-TEK® with GlideWear® STRETCH-AIR® with GlideWear®	COMFORT-TEK® STRETCH-AIR® COMFORT-TEK® with GlideWear® STRETCH-AIR® with GlideWear®
<b>Weight Capacity / Limit</b>	12" wide and under - 100 lbs 14" wide - 150 lbs 16" wide - 250 lbs 18" wide - 300 lbs 20" wide - 350 lbs 22" wide and > - 400 lbs	16" wide - 250 lbs 18" wide - 300 lbs 20" wide - 350 lbs 22" wide and > - 400 lbs	750 lbs	315 lbs	16" wide - 250 lbs 18" wide - 300 lbs 20" wide - 350 lbs 22" wide and > - 400 lbs	300 lbs	14" wide and under- 200 lbs 16"wide - 250 lbs 18" wide - 300 lbs 20" wide - 350 lbs 22" wide and > - 400 lbs	14" wide and under- 200 lbs 16" wide - 250 lbs 18" wide - 300 lbs 20" wide - 350 lbs 22" wide and > - 400 lbs
<b>Warranty</b>	6 months cover 5 years cushion	6 months cover 5 years cushion	6 months cover 5 years cushion	6 months cover 12 months cushion	6 months cover 5 years cushion	6 months cover 24 months cushions	6 months cover 5 years cushion	6 months cover 5 years cushion
<b>Add-ons</b>	Incontinence liner	Incontinence liner	-	-	Incontinence liner Extra cover	-	GlideWear™ ATI Incontinence liner Extra cover Growth notches Rail cuts Colored piping	GlideWear™ ATI Incontinence liner Extra cover Growth notches Rail cuts Colored piping



**Comfort**  
Saddle 7 Series



**ROHO®**  
Single  
Compartment



**ROHO®**  
Hybrid Elite SR®  
Single Compartment



**ROHO®**  
HYBRID ELITE®  
Dual Compartment



**Vicair**  
Vicair® Adjuster O2



**Comfort**  
Embrace™ with ATI



**Comfort**  
M2 with ATI



**Vicair**  
Vicair® Active O2

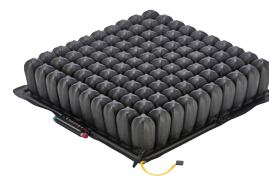
<b>Widths</b>	22" - 30" (2" increments)	10" - 27" (1" increments) 5 - 15 cells	14" - 18" (1" increments), 20", 22", and 24"	14" - 18" (1" increments), 20", 22", and 24"	Standard: 14" - 21" (1" increments) Low: 14" -21" (1" increments) Custom sizes are available	10" - 24" (1" increments)	10" - 24" (1" increments)	Standard: 14" - 24" (1" increments) Low: 14" - 21" (1" increments) Custom sizes are available
<b>Depths</b>	18" and 20"	10" - 25" (1" increments) 5 - 14 cells	14" - 18" (1" increments), 20" and 22"	14" - 18" (1" increments), 20" and 22"	14" - 18" (1" increments) Custom sizes are available	10" - 24" (1" increments)	10" - 24" (1" increments)	Standard: 14" - 24" (1" increments) Low: 14" - 24" (1" increments) Custom sizes are available
<b>Cushion Thickness Dimensions</b>	4.5" 3.5" inferior thigh 5" abductor	HIGH PROFILE® 4.25" cell height MID PROFILE™ 3.25" cell height LOW PROFILE® 2.25" cell height	4.25"	4.25"	Standard: 3.93" / 10 cm Low: 2.36" / 6 cm	Zero-elevation: ≤ 16" x 14", 3" ≥ 16" x 16", 4"  Anti-thrust: ≤ 16" x 14", 3" ≥ 16" x 16", 3"	Zero-elevation: ≤ 16" x 14", 3" ≥ 16" x 16", 4.25"  Anti-thrust: ≤ 16" x 14", 2.75" ≥ 16" x 16", 3.75"	Standard: 3.5" / 9 cm Low: 2.36" / 6 cm
<b>Cushion Materials</b>	Foam Optional QuadraGel® insert	Flowing air	Foam Flowing air insert	Foam Flowing air insert	Non Flowing air	Foam	Foam, QuadraGel® insert	Non Flowing air
<b>Cover Options</b>	Solace fabric with Kwik-Strap	Two-way stretch Heavy duty cover (non coded)	Two-way stretch Heavy duty cover (non coded)	Two-way stretch Heavy duty cover (non coded)	Reversible Air Exchange	COMFORT-TEK® STRETCH-AIR® COMFORT-TEK® with GlideWear® STRETCH-AIR® with GlideWear®	COMFORT-TEK® STRETCH-AIR® COMFORT-TEK® with GlideWear® STRETCH-AIR® with GlideWear®	Active cover
<b>Weight Capacity / Limit</b>	750 lbs	No weight limit if appropriately sized to the individual	500 lbs	500 lbs	550 lbs	14" wide and under- 200 lbs 16" wide - 250 lbs 18" wide - 300 lbs 20" wide - 350 lbs 22" wide and > - 400 lbs	14" wide and under- 200 lbs 16" wide - 250 lbs 18" wide - 300 lbs 20" wide - 350 lbs 22" wide and > - 400 lbs	440 lbs
<b>Warranty</b>	6 months cover 5 years cushion	6 months cover 24 months cushion	6 months cover 24 months cushion	6 months cover 24 months cushion	24 months cover Lifetime on SmartCells™	6 months cover 5 years cushion	6 months cover 5 years cushion	24 months cover Lifetime on SmartCells™
<b>Add-ons</b>	-	Smart Check Privacy Shield Planar Solid Seat insert Contour base	Smart Check Privacy Shield	Privacy Shield	Extra Vicair SmartCells™	GlideWear™ ATI Incontinence liner Extra cover Growth notches Rail cuts Colored piping	GlideWear™ ATI Incontinence liner Extra cover Growth notches Rail cuts Colored piping	Extra Vicair SmartCells™



**Vicair**  
Vicair® Vector O2



**ROHO®**  
Dual Compartment



**ROHO®**  
QUADTRO SELECT®



**ROHO®**  
CONTOUR SELECT®



**ROHO®**  
ENHANCER®



**ROHO®**  
Hybrid Select



**Comfort**  
Custom Inception

<b>Widths</b>	14" - 24" (1" increments) Custom sizes are available	10" - 27" (1" increments) 5 - 15 cells	10" - 27" (1" increments) 5 - 15 cells	10" - 27" (1" increments) 5 - 15 cells	10" - 27" (1" increments) 5 - 15 cells	14" - 18" (1" increments) and 20"	10" - 28" (1" increments)
<b>Depths</b>	14" - 24" (1" increments) Custom sizes are available	10" - 25" (1" increments) 5 - 14 cells	10" - 25" (1" increments) 5 - 14 cells	10" - 25" (1" increments) 5 - 14 cells	10" - 25" (1" increments) 5 - 14 cells	14" - 18" (1" increments) and 20"	10" - 28" (1" increments)
<b>Cushion Thickness Dimensions</b>	Standard: 3.93" / 10 cm Low: 2.36" / 6 cm	HIGH PROFILE® 4.25" cell height LOW PROFILE® 2.25" cell height	HIGH PROFILE® 4.25" cell height MID PROFILE™ 3.25" cell height LOW PROFILE® 2.25" cell height	2.25" - 4.25" due to contour	2.25" - 4.25" due to contour	5" 2.5" inferior thigh	Contact Customer Experience for additional information and sizes.
<b>Cushion Materials</b>	Non Flowing air	Flowing air	ISOFLO® Memory Control Flowing air	ISOFLO® Memory Control Flowing air	Flowing air	Foam ISOFLO® Memory Control Flowing air inserts	Foam ROHO® insert (Flowing air) QuadraGel® insert Ischial gel insert
<b>Cover Options</b>	Reversible Air Exchange	Two-way stretch	Two-way stretch Heavy Duty	Two-way stretch	Two-way stretch	Two-way stretch	COMFORT-TEK® STRETCH-AIR® COMFORT-TEK® with GlideWear® STRETCH-AIR® with GlideWear®
<b>Weight Capacity / Limit</b>	550 lbs	No weight limit if appropriately sized to the individual	No weight limit if appropriately sized to the individual	No weight limit if appropriately sized to the individual	No weight limit if appropriately sized to the individual	500 lbs	No weight limit if appropriately sized to the individual
<b>Warranty</b>	24 months cover Lifetime on SmartCells™	6 months cover 24 months cushion	6 months cover 36 months cushion	6 months cover 36 months cushion	6 months cover 24 months cushion	6 months cover 36 months cushion	6 months cover 5 years cushion
<b>Add-ons</b>	Extra Vicair SmartCells™	Privacy Shield Planar Solid Seat insert Contour base	Privacy Shield Planar Solid Seat insert Contour base	Privacy Shield Planar Solid Seat insert Contour base	Privacy Shield Planar Solid Seat insert Contour base	Privacy Shield	GlideWear™ ATI Incontinence liner Extra cover Growth notches Rail cuts Coccyx cutout Leg length discrepancy Colored piping



ROHO®  
Custom



Comfort  
TruShape



Vicair®  
Vicair® Junior Vector



Vicair®  
Vicair® O2 Xxtra

<b>Widths</b>	10" - 27" (1" increments) 5 - 15 cells	Based on individual measurements	10" - 14" (1" increments)	22" - 30" (2" increments) Custom are available
<b>Depths</b>	10" - 27" (1" increments) 5 - 15 cells	Based on individual measurements	10" - 14" (1 increments)	18" - 30" (2" increments) Custom are available
<b>Cushion Thickness Dimensions</b>	2.25" - 4.25" cell height Contact Customer Experience for additional information.	Contact Customer Experience for additional information and sizes.	4" / 10 cm	4" / 10 cm
<b>Cushion Materials</b>	Flowing air ISOFLO® Memory Control Single and Multiple Compartments	Foam ROHO® insert (Flowing air)	Non-flowing air	Non-flowing air
<b>Cover Options</b>	Two-way stretch Heavy duty cover	Neoprene Spacer fabric Breathe 4™ COMFORT-TEK® STRETCH-AIR®	Incotec Air Exchange	Incotec Air Exchange
<b>Weight Capacity / Limit</b>	No weight limit if appropriately sized to the individual	No weight limit if appropriately sized to the individual	220 lbs / 100 kg	1102 lb / 500 kg
<b>Warranty</b>	6 months cover 36 months cushion	6 months cover 5 years cushion	24 months cover Lifetime on SmartCells™	24 months cover Lifetime on SmartCells™
<b>Add-ons</b>	HD cover Planar Solid Seat insert Contour base	Double reinforcement Soft spots Soft spot overlay Ventilation holes Leg length discrepancy Undercuts Rail cuts Corner notches Extra cover	Extra Vicair SmartCells™	Extra Vicair SmartCells™



## Adjustable Technology Insert

The Adjustable Technology Insert (ATI) is a moldable, high strength, light weight aluminum base that allows for individualized positioning and support.

### Key benefits:

- Remoldable to accommodate the user's needs over time
- Designed to be placed beneath a compatible cushion, inside the cushion cover.
- Includes the metal insert, bending tool and operation manual

## GlideWear™

GlideWear™ technology is designed to reduce the risk of pressure injury through the use of shear reduction forces allowing for skin protection.

It offers 100% breathability for microclimate control and is latex free.

Available on select Comfort cushions.